

 **KARISMA**<sup>®</sup>  
B E A U T Y D E S I G N

# SALON COLORS




 MADE IN ITALY

## Skai Collection SPECIAL




SPECIAL S82 



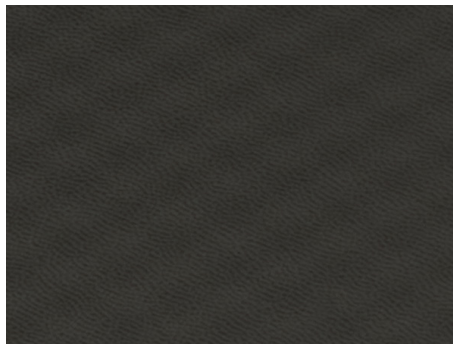
SPECIAL S81 




SPECIAL S83 



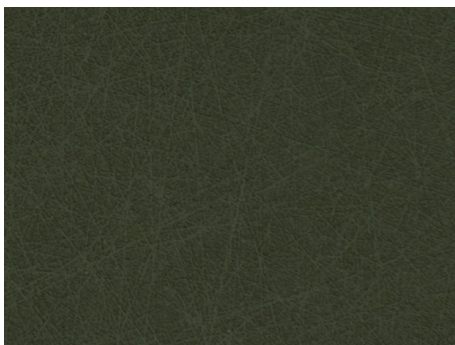
SPECIAL S84 



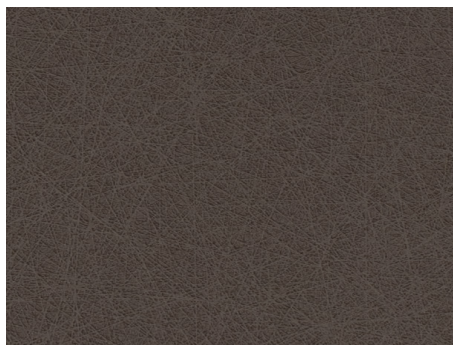
SPECIAL S85 




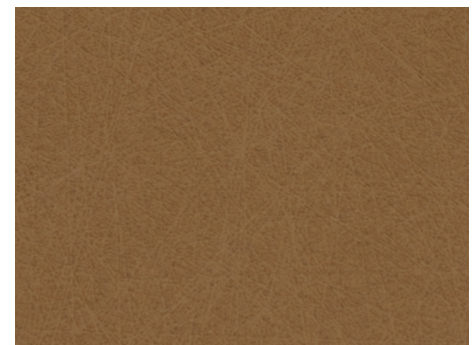
SPECIAL S60 



SPECIAL S62 



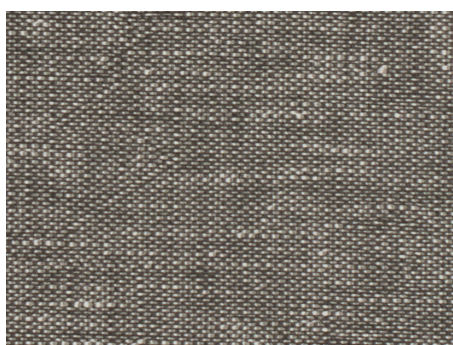
SPECIAL S63 



SPECIAL S61 



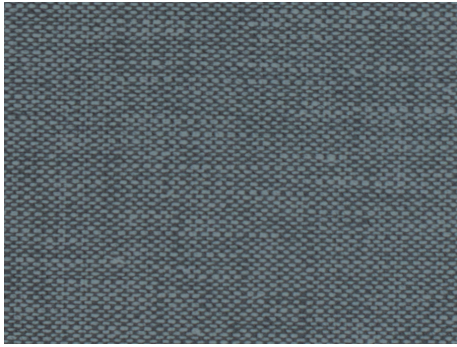
SPECIAL S64 



SPECIAL S55 

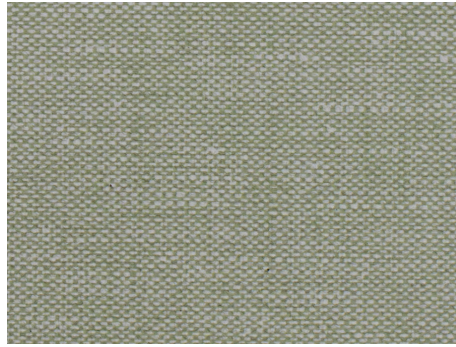


SPECIAL S56 



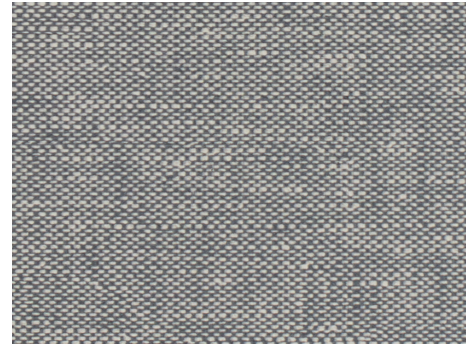
SPECIAL

S57



SPECIAL

S58

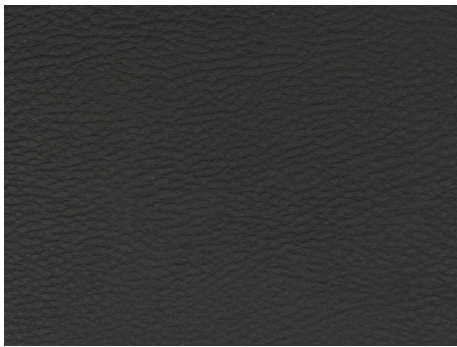


SPECIAL

S59



## Skai Collection BASIC



BASIC

M01



Attenzione: i nostri skai non sono anti-macchia.  
Pulitura: Pulire semplicemente con acqua tiepida ed un telo in microbra. Non usare solventi, cloruri, abrasivi, detergenti chimici o lucidi a base di cera. Togliere le macchie di inchiostro immediatamente. Non usare prodotti contenenti olio o grasso.

Attention: our skai are not stain-resistant.  
Cleaning: Simply clean with lukewarm water and a micro-bre rag. Please do not use any solvents, products containing chlorine, abrasives, chemical detergents or wax-based polishes.  
Remove ink stains immediately. Do not use any care agents containing oil or grease.

Attention: nos skai ne sont pas antitaches.  
Nettoyage: Nettoyer simplement avec de l'eau tiède et un chiffon en microbre. Ne pas utiliser de solvants, chlorures, abrasifs, détergents chimiques ou produits à cire. Enlever les taches d'encre immédiatement. Ne pas employer de produits contenant de l'huile ou de la graisse.

Achtung: Unsere Skai sind nicht schmutzabweisend.  
Reinigung: Einfach mit lauwarmem Wasser und einem Mikrofaser Tuch reinigen. Bitte verwenden Sie keine Lösungsmittel, Chloride, Scheuermittel, chemische Reinigungsmittel oder Wachspoliermittel. Tinteecken bitte umgehend entfernen, keine Öl-order fetthaltigen Mittel verwenden.

Atención: nuestros skai no son resistentes a las manchas.  
Limpieza: Limpiar simplemente con agua tibia y un trapo en microbra. No utilizar disolventes, cloruros, abrasivos, detergentes químicos o brillos con cera. Quitar pronto las manchas de tinta. No utilizar productos que contengan aceite o grasa.



UNI 9175: 2010



UE Standards  
EN 1021-1+2