




KARISMA®
B E A U T Y D E S I G N

**SALON
COLORS
22/23**

 MADE IN ITALY

Skai Collection SPECIAL



SPECIAL S13 



SPECIAL S49 



SPECIAL SA1 



SPECIAL S01 



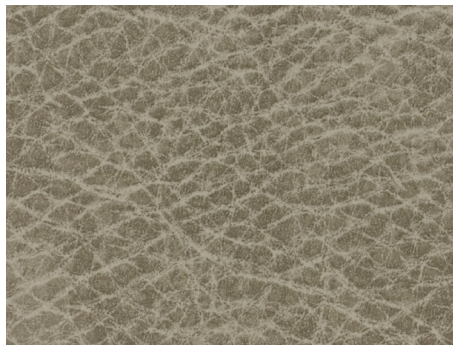
SPECIAL SA4 



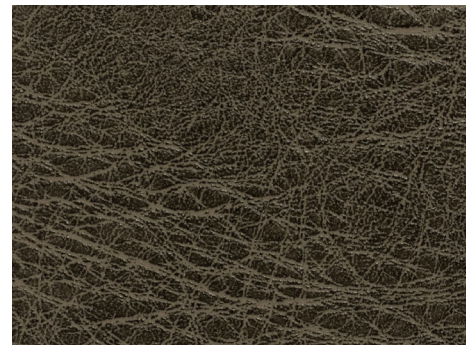
SPECIAL SA7 



SPECIAL S07 



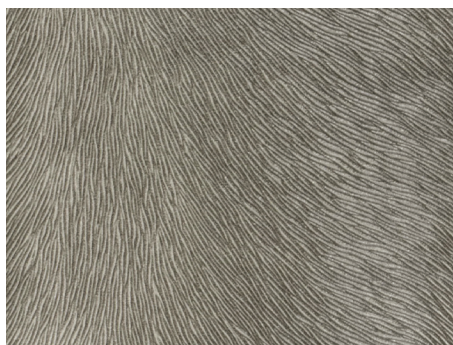
SPECIAL S08 



SPECIAL S09 



SPECIAL S91 



SPECIAL S03 

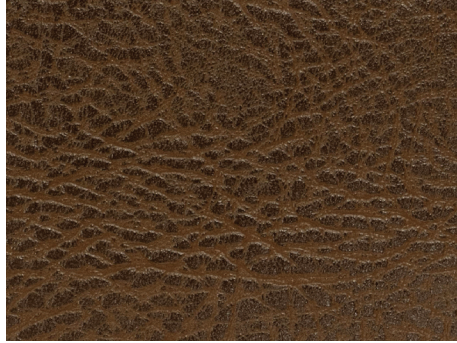


SPECIAL SA5 



SPECIAL

S48



SPECIAL

S10



SPECIAL

SA8



SPECIAL

S05



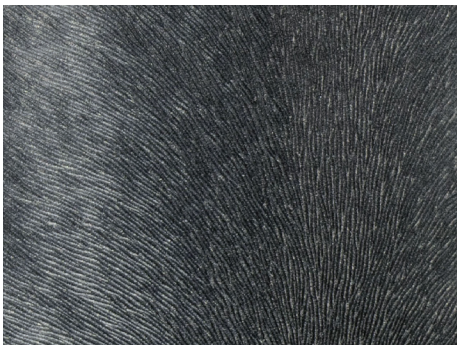
SPECIAL

SC1



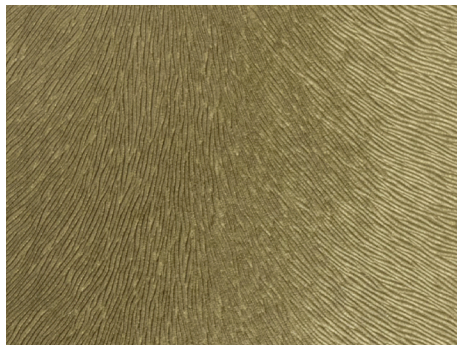
SPECIAL

S11



SPECIAL

S04



SPECIAL

S06



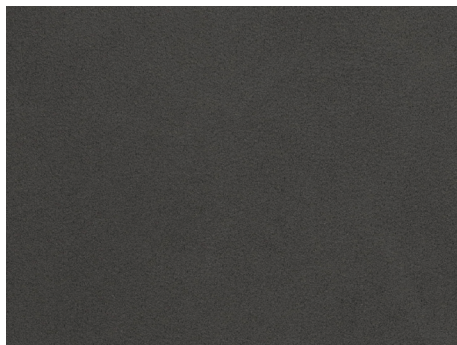
SPECIAL

S17



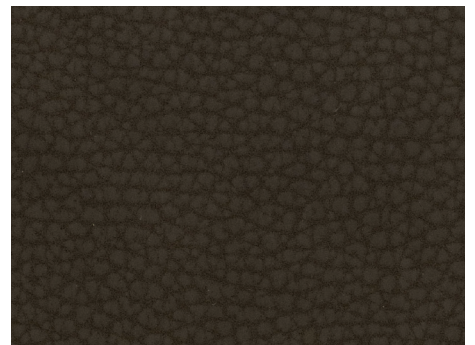
SPECIAL

S46



SPECIAL

SA6



SPECIAL

S38





SPECIAL

SB1



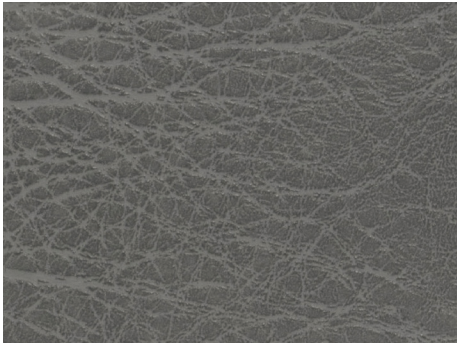
SPECIAL

SB2



SPECIAL

S29



SPECIAL

S31



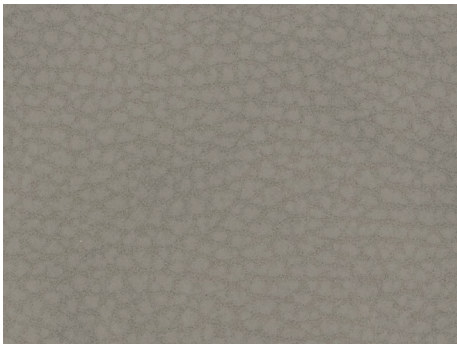
SPECIAL

S47



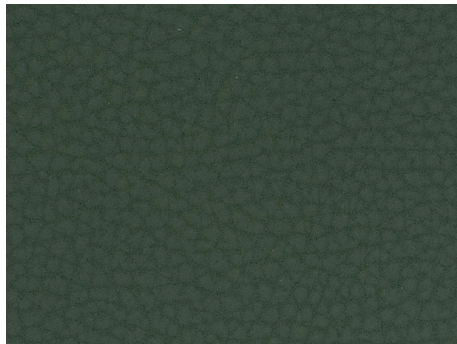
SPECIAL

S12



SPECIAL

S37



SPECIAL

S90



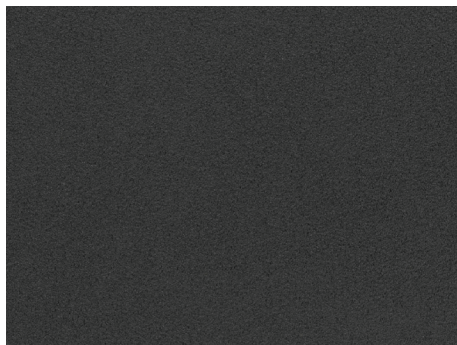
SPECIAL

S98



SPECIAL

SA2



SPECIAL

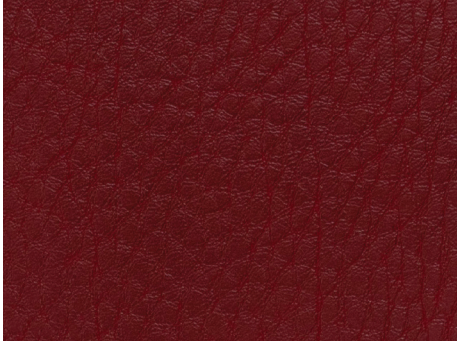
SA3



SPECIAL

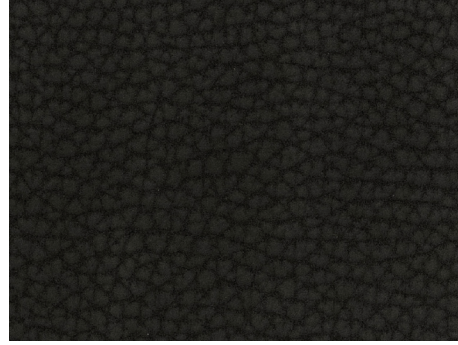
S30





SPECIAL

S45



SPECIAL

S35



SPECIAL

S18



SPECIAL

S50



Skai Collection BASIC



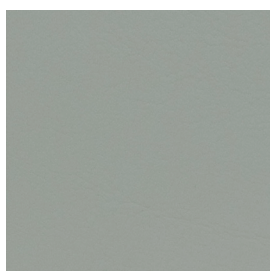
BASIC B02



BASIC B65 



BASIC B49



BASIC B45



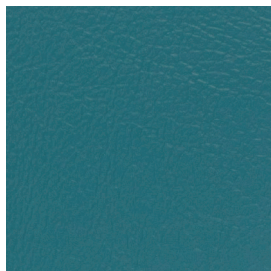
BASIC B66 



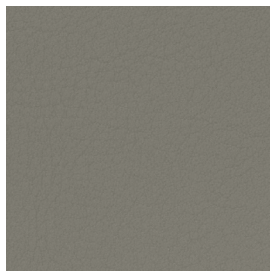
BASIC B40



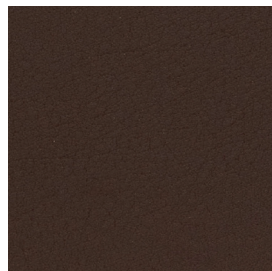
BASIC B44



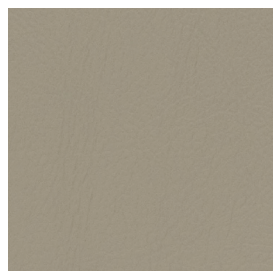
BASIC B68 



BASIC B28



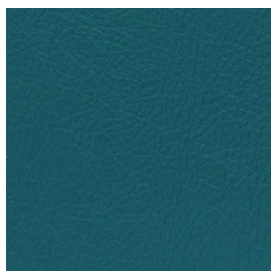
BASIC B41



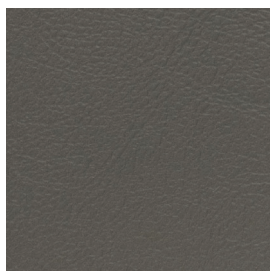
BASIC B08 



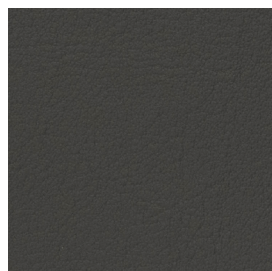
BASIC B05



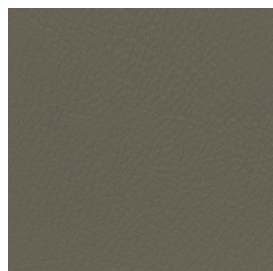
BASIC B63 



BASIC B67 



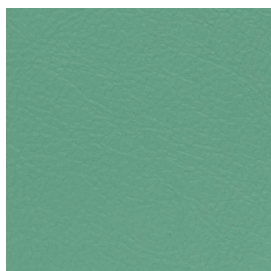
BASIC B22



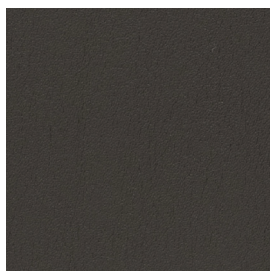
BASIC B64 



BASIC B48



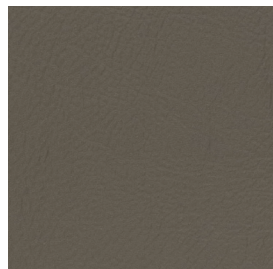
BASIC B69 



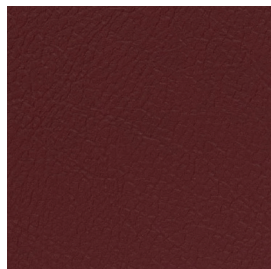
BASIC B03



BASIC B01



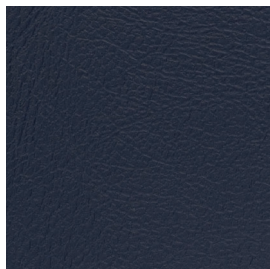
BASIC B09 



BASIC B12 



BASIC B51



BASIC B11 



Attenzione: i nostri skai non sono anti-macchia.
Pulitura: Pulire semplicemente con acqua tiepida ed un telo in microbra. Non usare solventi, cloruri, abrasivi, detergenti chimici o lucidi a base di cera. Togliere le macchie di inchiostro immediatamente. Non usare prodotti contenenti olio o grasso.

Attention: our skai are not stain-resistant.
Cleaning: Simply clean with lukewarm water and a micro-bre rag. Please do not use any solvents, products containing chlorine, abrasives, chemical detergents or wax-based polishes.
Remove ink stains immediately. Do not use any care agents containing oil or grease.

Attention: nos skai ne sont pas antitaches.
Nettoyage: Nettoyer simplement avec de l'eau tiède et un chiffon en microbre. Ne pas utiliser de solvants, chlorures, abrasifs, détergents chimiques ou produits à cire.
Enlever les taches d'encre immédiatement. Ne pas employer de produits contenant de l'huile ou de la graisse.

Achtung: Unsere Skai sind nicht schmutzabweisend.
Reinigung: Einfach mit lauwarmem Wasser und einem Mikrofaser-tuch reinigen. Bitte verwenden Sie keine Lösungsmittel, Chloride, Scheuermittel, chemische Reinigungsmittel oder Wachspoliermittel. Tinteecken bitte umgehend entfernen, keine Öl-order fetthaltigen Mittel verwenden.

Atención: nuestros skai no son resistentes a las manchas.
Limpieza: Limpiar simplemente con agua tibia y un trapo en microbra. No utilizar disolventes, cloruros, abrasivos, detergentes químicos o brillos con cera. Quitar pronto las manchas de tinta. No utilizar productos que contengan aceite o grasa.